

REGIONAL CORE ISSUES SEMINAR

Fall 2006, MGT 660

Asia Pacific Leadership Program (APLP) – East-West Center

Scott MacLeod

944-7373, Office Burns Hall #2099,

macleods@apl.eastwestcenter.org

Monique Wedderburn

944-7767, Office Burns Hall # 2092

wedderburnm@apl.eastwestcenter.org

Please see the APLP Weekly Schedule for class times and locations

Navigating Change:

Mapping the Contexts of Leadership in the Asia-Pacific

Please also see APLP Code of Conduct, Classroom Guidelines and APLP Weekly and Assignments Schedules for further details.

Program Vision and Mission: Navigating Change

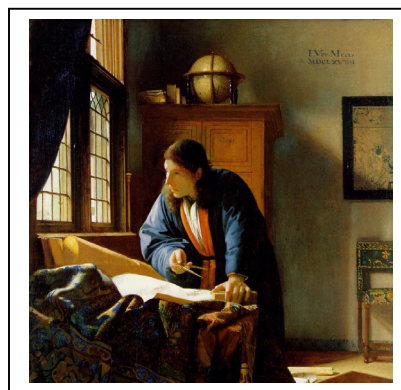
The APLP introduces candidates from a wide spectrum of national origins and fields to a blend of regional and leadership coursework. We believe that through the interpretation of 'real world' events in the Asia-Pacific and the development of leadership capacity we are building towards a community of success that will in turn enhance the outcomes of Asia Pacific Integration.

Regional Core Issues Seminar: Making Your Map

The discovery and development of leadership attributes needs to be combined with an ability to manage diverse forms of information, critically evaluate issues and interpret regional contexts. The Regional Core Issues (RCI) Seminar seeks to provide both broad regional understanding and focused engagement of key issues in an interdisciplinary and interactive manner (please also see 'Preface' in Course Draft Textbook).

General Objectives of Regional Core Seminar

- To engage key issues facing the region and the diverse ways of seeing these issues
- To develop the capacity to interpret issues across traditional disciplinary boundaries
- To illuminate the reflexive nature of global dynamics and local specificities
- To provide contextual information for the continuous formation of individual leadership visions
- To examine likely future trajectories of the region and its constituent peoples including risk analysis and strategy



<http://www.ibiblio.org/wm/paint/auth/vermeer/r/geographer.html>

Specific Outcomes

On successful completion of the course, participants will:

- be aware of where to access main informational resources on regional trends
- be able to recognize key dynamics, figures or groups, and their national and regional impacts.
- be able to analyze and interpret key regional issues, data, events, and change.
- be conversant in main debates regarding the interpretation of cultural, economic, social, political and environmental trends in the region.
- be able to engage in simulation and scenario building exercises.

Content: Features to be Mapped

The course involves presentations by the instructor and various experts from within the Center, the University of Hawaii and further afield. It also involves presentations by participants, roundtable discussion groups, interactive learning case studies, scenario modeling, online discussions and field study activities.

Course Flow, Modules: the course is divided into a series of topic modules which broadly follow the EWC Research Areas.

1. Introduction to global and regional contexts
2. Demographic Issues and Trends
3. Governance (including state, corporate, NGO and network organizational trends)
4. Intra-Regional relations, interdependence and security issues
5. New York, Washington DC Field Study
6. Interpreting regional markets and economic trajectories
7. Environment and health: risk and policy issues
8. Vietnam Field Study

The content is sequenced in this order to integrate with the content of the Leadership and Professional Development Seminars, to prepare for field studies exercises, and to build to the concluding 'Futures' activities and presentations in Vietnam.

Module Structure: each module includes the following content

1. Advance Readings (most are in the Readings Suggestions listing given out in the preterm)
2. Module Launch Class outlining main analytical tools, themes and issues
3. Master Classes (focused sessions with guests, you will select from options)
4. Discussion Groups (run by class on specific topics, you will select from options)
5. 'News' Presentations based on module themes and presented by the class

For approximately every two modules there will also be:

6. Friday "Topic-fests" (with roundtable sessions and other activities)
7. Summative Review (to gauge progress/learning)

Field Studies:

All three field studies are integrated into the Regional Core Issues course. It is important that you take advantage of the places we go and people we meet to hone your evolving understanding of the multiple and diverse contexts of leadership within the region. A prime purpose of the RCI classroom work is to enhance the activities during field studies.

For RCI, the primary goals for the field studies are:

- ❖ **Molokai** (August 31 – Sept 4): 1) Develop team learning capacity; 2) engage Hawaii as a locale of change in the Asia Pacific; and 3) begin discussion of key goals and themes for the year.
- ❖ **New York/Washington, DC** (October 14 - 24): 1) Increase understanding of how the US (as a key regional player) operates; 2) meet and engage top level experts in interpreting the Asia Pacific and in leading the interaction of the United States with the region; 3) understand the role of the United State's and its priorities and concerns vis a vis the Asia Pacific; and 4) visit multilateral institutions based in the US which deal with the 'core issues' of our course.
- ❖ **Vietnam** (November 24 – December 19): 1) Examine issues of regional change and challenges with Vietnam as a case study; 2) carry out specific field work at local level; 3) meet and engage local leaders and experts; and 4) present content at the alumni conference.

Study Groups: Your Study Groups have a number of roles in RCI. These include:

- 1) Shared learning and support with content (as partially indicated by team success in Summative Reviews)
- 2) Hosting one of the modules above.
- 3) Teamwork in Futures and other integrative activities
- 4) Teamwork in 'Discover Vietnam' activity during Vietnam Field Study
- 5) Presentations at Vietnam Alumni Conference
- 6) Assistance in course text preparation and communications efforts

Assessment: Evaluating Your Map Making

The three main areas you will be evaluated in are:

- 1) APLP engagement and progress on personal learning goals;
- 2) Study Group teamwork and outcomes in integrative activities (such as Vietnam Presentation);
- 3) Individual presentations, and writing assignments as collected in your portfolio.

1. Engagement (30%)

'Engagement' refers to your level of involvement with, and commitment to course and program activities as well as your individual progress in terms of personal learning goals. The assessment of engagement will be carried out by yourself, the APLP staff and your classmates throughout the term as follows:

- 1) Start of Term: Assessed by you: Setting your personal learning goals
- 2) Midterm: Assessed by you and staff evaluating progress on personal learning goals and overall program participation and contribution
- 3) End of Term: Assessed by you, staff and peers evaluating progress on personal learning goals and overall program participation and contribution

Areas of assessment include:

Self Assessment – ranking of objectives at beginning, middle and end of program. A worksheet will be given out to assist in creation of your list of learning objectives. At the midterm and at the end of term you will be asked to evaluate your progress in terms of goals and in overall program participation.

Staff Assessment – will cover staff observation of your progress in your personal learning goals, contributions to class work, group discussions and the APLP learning community (including online, field and other activities). Each course also has specific areas of main focus for assessing engagement (see RCI below). You will receive a progress report at the mid point of the term.

Peer Assessment – Study Groups evaluate team members on objectives and in terms of Study Group contributions.

At the end of term the instructors for the three seminars will meet and discuss the various assessments above and your work in specific courses and arrive at consensus evaluation for your overall engagement. This approach is taken in order to avoid any possible individual biases and to reflect your integrated program engagement.

Specific areas of Regional Core Issues assessment in terms of engagement include:

Attendance – Attendance and active participation in courses, activities, field studies and all course elements. Participation includes on time attendance as well as active, informed and inclusive participation in course discussions (in class, online and in the field). The participation assessment also includes a reflection of the quality of questions asked in presentations.

Discussions, Master Classes, Workshops and Guest Speakers – Our class is structured around opportunities to discuss ideas and meet with leading experts on key topics. You will be evaluated on your presence and involvement in these activities. Involvement means having done preparatory work, engaging in discussions and contributing to the overall success of a session.

Seminar Facilitation – Participants will work in groups of three to develop the “Core Discussions.” This will involve, working with the instructor to identify seminar focus and readings, ‘marketing’ your seminar, facilitating and recording discussion and providing a follow-up review for the class as a whole.

Study Groups Weeks – For two weeks during the term, your study group will be responsible for many aspects of the RCI course delivery. This will include such activities as communicating with speakers, introducing guests, ‘capturing content’ (providing summary notes for the class and our book in progress), generating ‘thinking points’, and anything else you can do to make your two weeks the best of the term. Your Study Group will be expected to have collectively done all the reading and act as resources people to the rest of the class on the module’s topics.

Summative Reviews – Need to pass to pass the course

Review examinations will be given to assist faculty in gauging participant understanding of material, to deepen engagement with material and to assure we can build on a strong base. Reviews will consist of questions concerning terminology and themes. Failure on any review (less than 65%) will require a rewrite. In general only one rewrite will be given. **All reviews must be passed to successfully complete the requirements of the course.**

2. Teamwork, Content Integration and Application (30%)

Each of these activities is designed to integrate all program work (i.e., all three courses) and will have a separate handout outlining expectations for each activity. You will receive feedback on each activity and an overall grade for the totality of your work in these areas combined. The primary focus of assessment in these areas is on the actual events/outcomes. For RCI assessment you will receive one cumulative assessment for the sum of your work in these activities. Events with special relevance for RCI include:

All Field Studies

Joint Scenario Building Exercise (Final Futures Session Nov 21)

Vietnam Final Presentation – actual outcomes and performance on presentation day during conference

Discover Vietnam outcomes and team success

Ad Hoc class and program projects – as developed during semester

3. Personal Portfolio: Individual and Team Work (40%)

The detailed requirements of the portfolio will be distributed separately. The portfolio is a reflection of your total progress for the term. RCI required elements include the following (some of which are 'shared' with other courses).

News Presentations (10%) (Shared activity with PD Seminar)

Two News Presentations: You will be asked to sign up for 'News' presentations as part of our Monday morning class. Weekly topic areas are in the schedule and you will need to localize these general themes. Please also prepare a one-page handout of presentation content and references for the audience to be handed in (on the Hub, in RCI Folder) by Sunday afternoon at 5pm. You will include this handout in your Portfolio. Please also include a 'Handout' version (6 slides per page) of your presentation if you use Powerpoint.

The actual assessment of this activity will be based on the presentation. As we have many presentations we will be strict with the time limit – 3 minutes. Grading for News presentations will be based approximately on: content (55%) Style (25%) and answers to questions (20%). You will receive a handout on the specific evaluation criteria. Content includes clarity of focus and how you 'add-value' to the topic.

Writings: (30 %) (approx 4,000 words)

As you will likely be much more interested in certain of these activities, and thus produce your best work in that area, your grading in this area will be for the totality of the work below. This said, all 'writings' must reach a 70% quality level.

See Program assignment schedule for 'a-c' and do ??

a) 'Think Pieces' (6 @ 300 words)

Think pieces are not research-based. You will simply write 6 short essays (300 words max) on aspects of the coursework which intrigue you. At least two think pieces should make connections across modules (e.g., between Environment and Governance). At least one of your think pieces should arise from the Field Studies.

b) Interviews (2) (each approx 400 words – 700 maximum) (Shared activity with PD Seminar)

Present summaries of interviews with individual professionals of interest to you. Interviewees and rationale for selecting need to be approved by the instructor so the earlier you set your sights the better.

Content should include specifics of interview (time/date/location), name and position of interviewee, why you selected this individual, your preparation sheet of questions and a summary of the discussion. This latter element should not merely be a transcript but should also highlight the key things you learned.

c) And the core issue is... (400 words)

Write a 400-word reflection on what you have come to see as the main issues facing the Asia Pacific (please discuss between 1-3 issues as you choose).

d) Vietnam Log

During the Vietnam Field Study and especially during the 'Discover Vietnam' exercise you will be asked to keep a log of your activities and findings (detailed requirements to come before field school).

e) One 'publication.'

A short (say 250 words) passage on any topic of your choice in a publication approved by instructor.

f) Integrated Activities Experience

A short (400 word) review of your learnings from the integrated activities listed above. Should emphasize cross-cutting themes.

g) Bonus

Other work you might do this term which is not captured elsewhere (for example a photo essay, grad school personal statement, assistance with capture content or marketing efforts).

APLP Etiquette: Rules of the Road

As part of the APLP 3rd Culture, which we will co-create together, establishing a successful learning environment throughout all aspects of the program is of paramount importance. The following classrooms requirements and rules of etiquette are designed to further this goal:

- **Attendance:** Fellows are required to attend all APLP classes, field trips, events, meetings etc. If you cannot attend an APLP class or activity, you should submit written notice (via email) in advance to the Seminar coordinator.
- **Dress:** Please dress professionally. In Hawaii this means “aloha attire” (not jacket and tie for men). No shorts, slippers/flip-flops, or T-shirts in class.
- **Punctuality:** Please respect the learning environment, including the visiting instructors and your classmates, by arriving at least 5 minutes early. Classes will start and finish on time. Your time is important and will be honored.
- **Taboos:** No eating in class, unless food is provided for special events. No chewing gum. Drinks are permitted. Cell phones must be turned off at all times.
- **Preparation for Class:** Fellows are expected to come to class having read and actively engaged with designated readings, and having completed all assignments.
- **Active Participation:** While differences in English language ability, as well as cultural and educational backgrounds, will be taken into consideration, all fellows are expected to participate actively in the Seminars (and the APLP as a whole). Active participation includes contributing meaningfully to classroom discussions (without being called upon), practicing active listening, and maintaining a positive and supportive attitude toward instructors and classmates.

Specifically, please:

- Respect others
- Listen to and avoid interrupting others
- Resist the temptation to put words into another person’s mouth
- Be clear and concise
- Avoid side conversations
- Maintain a positive attitude
- Be open about your own ideas as well as the ideas of others
- Sit next to different people each class
- Be sensitive to different learning styles, language ability and communication norms
- Participate actively without dominating
- Follow the EWC Student Code of Conduct

RCI Schedule

WEEK 1

Tuesday	08/22/06	10:00-12:00	RCI	Asia	Course Introduction/Themes (Scott MacLeod)
Tuesday	08/22/06	14:00-16:00	RCI	Asia	Themes and Readings Review (Gen 6)
Friday	08/25/06	(9:30-15:30)	APLP		Progressive Roundtables "Community"
		9:30-10:20		Koi	Program Meeting, Setting the Day
		10:30-11:30		Koi	<i>Cultures of Difference (Roger Ames)</i>
				Koi	<i>Globalization and Public Goods (Deane Neubauer)</i>
				Koi	<i>Memory and Reconciliation (Namji Steinemann)</i>
		13:30-14:30		Koi	<i>What's in a Region? (Barbara Andaya)</i>
				Koi	<i>Globalization and Culture (Ric Trimillos)</i>
				Koi	<i>World History as Prism (Terry Bilgake)</i>
		14:30-15:30		Koi	Discussions with Charles Morrison

WEEK 2

Monday	08/28/06	10:00-12:00	RCI/PD	Asia	News - Hot off the Presses (Gen 6)
Tuesday	08/29/06	10:00-12:00	RCI	Asia	Cultural Lenses and Issues (Scott MacLeod)
Tuesday	08/29/06	14:00-16:00	RCI	Asia	Globalization and Disconnects (Scott MacLeod)
Thursday-Monday	08/31-09/04/06	Moloka'i Field Study			

WEEK 3

Tuesday	09/05/06	10:00-10:50	RCI	Burns 2121	Demography Introduction (Scott MacLeod)
Tuesday	09/05/06	11:00-12:00	RCI	Burns 2121	Demography in Asia Pacific (Minja Choe)
Tuesday	09/05/06	13:00-16:00	RCI		Demography Master Classes (Pick 1)
		13:00-14:20		Burns 2163	<i>Aging (Andrew Mason)</i>
		13:00-14:20		TBA	<i>Youth Bulge (Peter Xenos)</i>
		14:30-16:00		Burns 2163	<i>Education For All (Victor Ordonez)</i>
Wednesday	09/06/06		RCI		Discussions (Pick 1)
		8:30-9:20		Burns 2121	<i>Cosmopolitanism (Gen 6)</i>
		8:30-9:20		Burns 2063	<i>Fundamentalism (Gen 6)</i>
		9:30-10:20		Burns 2121	<i>State of Children (Gen 6)</i>
		9:30-10:20		Burns 2063	<i>Culture Matters (Gen 6)</i>
		10:30-11:20		Burns 2121	<i>Convergence/Divergence (Gen 6)</i>
		10:30-11:20		Burns 2063	<i>Generations (Gen 6)</i>

WEEK 4

Monday	09/11/06	10:00-12:00	RCI/PD	Asia	News - Generational Landmark Events (Gen 6)
Monday	09/11/06	12:00-12:30	RCI	Asia	Summative Review (Gen 6)
Tuesday	09/12/06	10:00-12:00	RCI		Introduction to Interpreting Markets (Scott MacLeod)
Tuesday	09/12/06	14:00-16:00	RCI	Asia	Key Economic Issues (Scott MacLeod)
Wednesday	09/13/06		RCI		Discussions (Pick 1)
		8:30-9:20		Burns 2121	<i>Bottom of Pyramid (Gen 6)</i>

8:30-9:20	Burns 2063	Debt (Gen 6)
10:30-11:20	Burns 2121	IMF/WB/ADB (Gen 6)
10:30-11:20	Burns 2063	Pacific Challenges (Gen 6)
11:30-12:20	Burns 2121	BRICs (Gen 6)
11:30-12:20	Burns 2063	Capital Flows (Gen 6)

WEEK 5

Monday	09/18/06	10:00-12:00	RCI/PD	Asia	News - Political, Economy (Gen 6)
Tuesday	09/19/06	(8:30-11:20)	RCI		Economics Master Classes (Pick 1)
		8:30-9:50		Burns 2121	Japan (<i>LaCroix</i>)
		8:30-9:50		Burns 2063	China (<i>Chu</i>)
		10:00-11:20		Burns 2121	Innovation (<i>Ernst</i>)
		10:00-11:20		Burns 2063	Energy Markets (<i>Fesheraki</i>)
Wednesday	09/20/06	(9:00-12:00)	RCI		Politics Master Classes (Pick 1)
		9:00-10:20		Burns 2121	Japan (Smith)
		9:00-10:20		Burns 2063	Philippines (Aquino)
		10:30-12:00		Burns 2121	India (Sankarana)
		10:30-12:00		Burns 2063	Indonesia (Baker)
Friday	09/22/06	9:00-16:00	APLP	Koi	Futures

WEEK 6

Monday	09/25/06	10:00-12:00	RCI/PD	Asia	News - Leaders in Trouble (Gen 6)
Monday	09/25/06	12:00-12:30	RCI	Asia	Summative Review
Tuesday	09/26/06	(8:30-11:20)	RCI		Discussions (Pick 1)
		8:30-9:20		Burns 2121	Democracy in the Asia Pacific (Gen 6)
		8:30-9:20		Burns 2063	Corporate Form (Gen 6)
		9:30-10:20		Burns 2121	Network Economics (Gen 6)
		9:30-10:20		Burns 2063	Corruption (Gen 6)
		10:30-11:20		Burns 2121	Network/Nation States (Gen 6)
		10:30-11:20		Burns 2063	Consensus (Gen 6)
Tuesday	09/26/06	14:00-16:00	RCI	Asia	China Rises (<i>McNally</i>)
Friday	09/29/06	9:30-15:00	RCI	Koi	RCI Fest
					<i>Strategic Mappings (Cossa)</i>
					<i>Progressive Roundtable</i>

WEEK 7

Monday	10/02/06	10:00-12:00	RCI/PD	Asia	News - DC Orgs and Issues (Gen 6)
Tuesday	10/03/06	(8:30-11:20)	RCI		Discussions (Pick 1)
		8:30-9:20		Burns 2121	Corruption (Gen 6)
		8:30-9:20		Burns 2063	Narratives and Futures (Gen 6)
		9:30-10:20		Burns 2121	Resource Conflicts (Gen 6)
		9:30-10:20		Burns 2063	Pacific Compacts (Gen 6)
		10:30-11:20		Burns 2121	Independence Movements (Gen 6)
		10:30-11:20		Burns 2063	Arms Races (Gen 6)
Tuesday	10/03/06	14:00-16:00	RCI	Koi	Human Rights (David Cohen)

WEEK 8

Tuesday	10/10/06	10:00-12:00	RCI	Koi	Risk (MacLeod) and Summative Review
Tuesday	10/10/06	14:00-16:00	RCI	Koi	World Risk Society (<i>MacLeod</i>)
Friday	10/13/06	No Classes			

NYC/DC Field Study

Possible Topics: State: America's Image Abroad, Rise of China// Senate: Hotspots: Pakistan, Korea, S Thailand // CAF // Prep for VN//Brookings China// IIE: Global Capital Imbalance // WB-IMF MDGs-GPGs //CATO: Social Entrep // Gates: Diseases // Avian Flu // Japan Going Forward // Networks // Asian Americans

Monday	10/23/06	Individual Interviews (PD)			
--------	----------	----------------------------	--	--	--

WEEK 10

Wednesday	10/25/06	14:00-16:00	RCI	Burns 2121	Environment Introduction (<i>MacLeod</i>)
Thursday	10/26/06	13:00-15:50	RCI		Master Class (Pick 1)
		13:00-14:20		TBA	Kyoto (Zhang)
		13:00-14:20		Burns 2063	Community Land Use (Fox)
		14:30-15:50		TBA	Climate Change (Shea)
		14:30-15:50		Burns 2063	Pollution (Sakena)
Friday	10/27/06	9:00-15:00	RCI	Asia	Environmental Tipping Points & RCI Fest (Martin)

WEEK 11

Monday	10/30/06	10:00-12:00	RCI/PD	Asia	News - Environment (Gen 6)
Tuesday	10/31/06	(8:30-11:20)	RCI		Discussions (Pick 1)
		8:30-9:20		Burns 2121	Environmental Risk (Gen 6)
		8:30-9:20		Burns 2063	Alternatives (Gen 6)
		9:30-10:20		Burns 2121	China and India (Gen 6)
		9:30-10:20		Burns 2063	Water (Gen 6)
		10:30-11:20		Burns 2121	Cities (Gen 6)
		10:30-11:20		Burns 2063	Energy (Gen 6)
Tuesday	10/31/06	14:00-16:00	RCI		TBA
Wednesday	11/01/06	13:30-15:00	APLP	Burns 2121	Vietnam Updates/Discussions
Thursday	11/02/06		RCI		Master Classes (Pick 2)
		9:00-10:30		Burns 2121	HIV/AIDS (Brown)
		9:00-10:30		Burns 2063	Avian Flu (Lewis)
		10:45-12:15		Burns 2121	Regional Health Care Issues (TBA)
		10:45-12:15		Burns 2063	Genetics (TBA)
Friday	11/03/06	9:00-11:30	RCI	Koi	Pacifica (<i>Monique Wedderburn</i>)
Friday	11/03/06	13:00-15:30	RCI	Koi	RCI Fest/Vietnam

WEEK 12

WEEK 13

Monday	11/13/06	10:00-12:00	RCI/PD	Asia	News - Futures
Monday	11/13/06	14:00-16:00	RCI	Asia	Urban Issues (TG McGee)

Tuesday 11/14/06 9:00-12:00 RCI Asia Urban Issues (TG McGee)

WEEK 14

Monday 11/20/06 10:00-12:00 RCI/PD Asia News - Vietnam (Gen 6)

Tuesday 11/21/06 9:00-16:00 RCI Koi Futures Asia Pacific

11/23/06-
12/18/06

Vietnam Field Study

**Post-Socialism // Post-Colonialism // Mekong // Identity // ASEAN // Japan-China //
Projects on Ground // Urbanization // Children**